

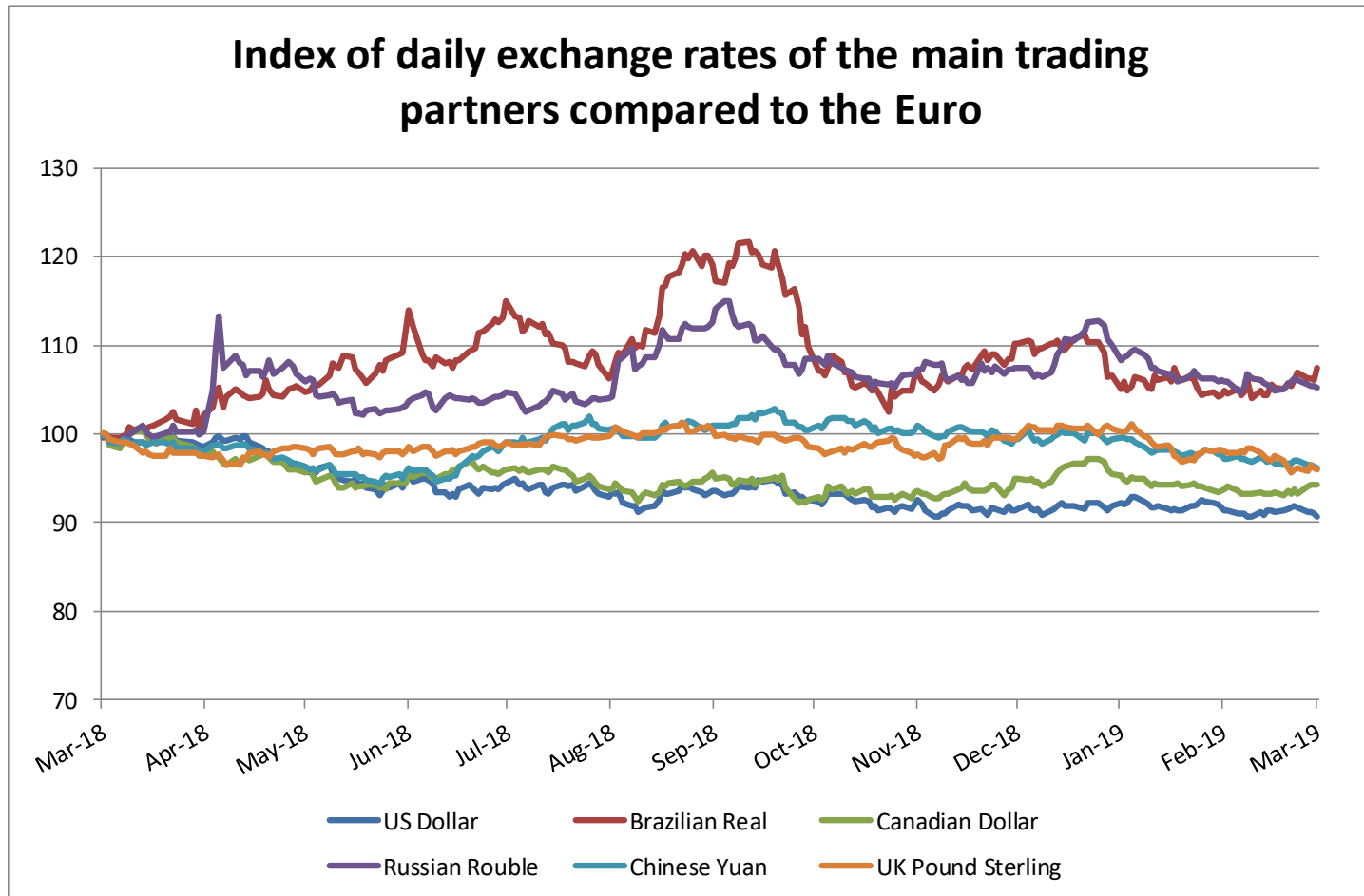


***Committee for the Common Organisation  
of the Agricultural Markets  
21 March 2019***

# EXCHANGE RATE INDEX/EURO

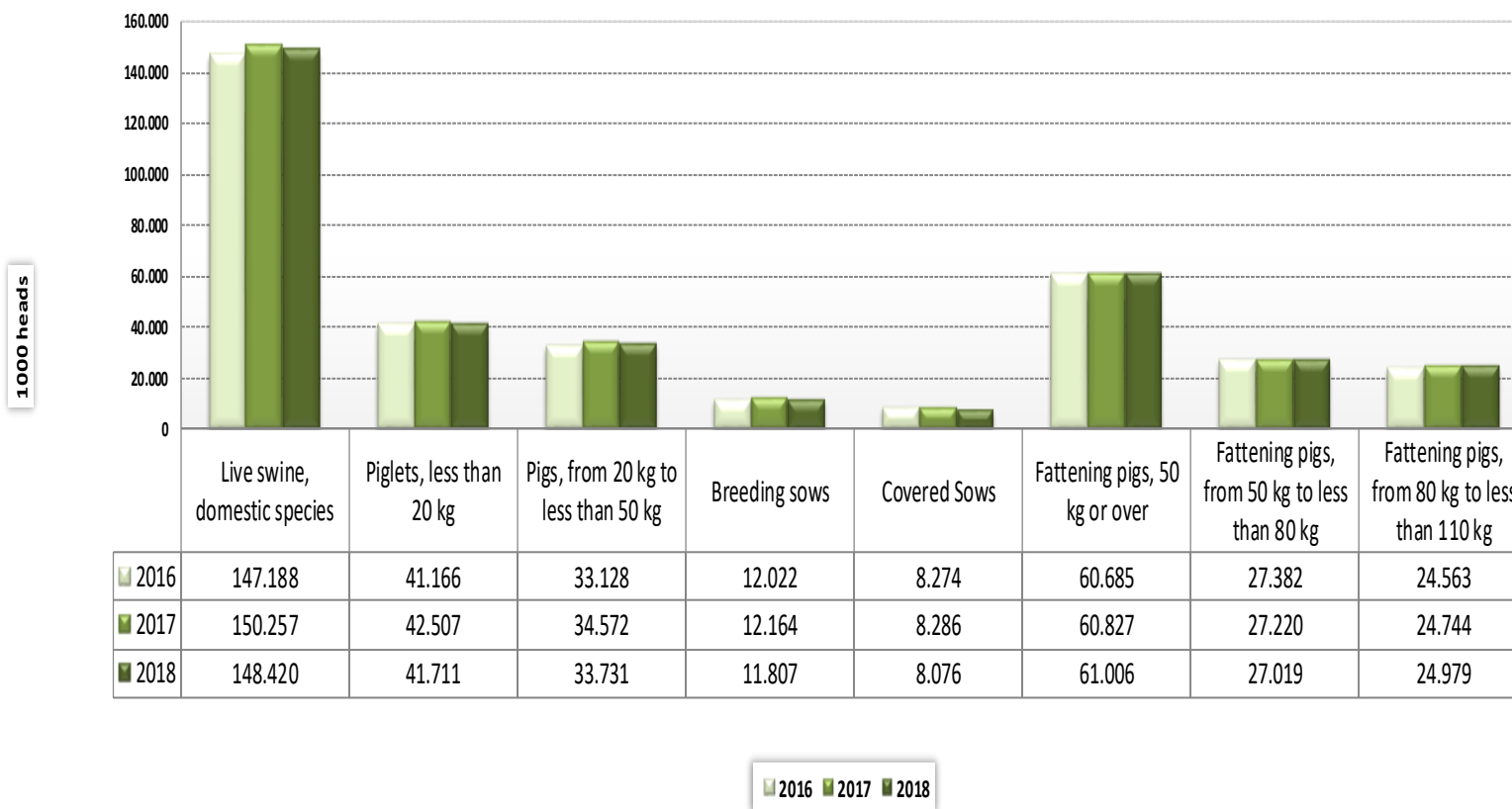


## Index of daily exchange rates of the main trading partners compared to the Euro





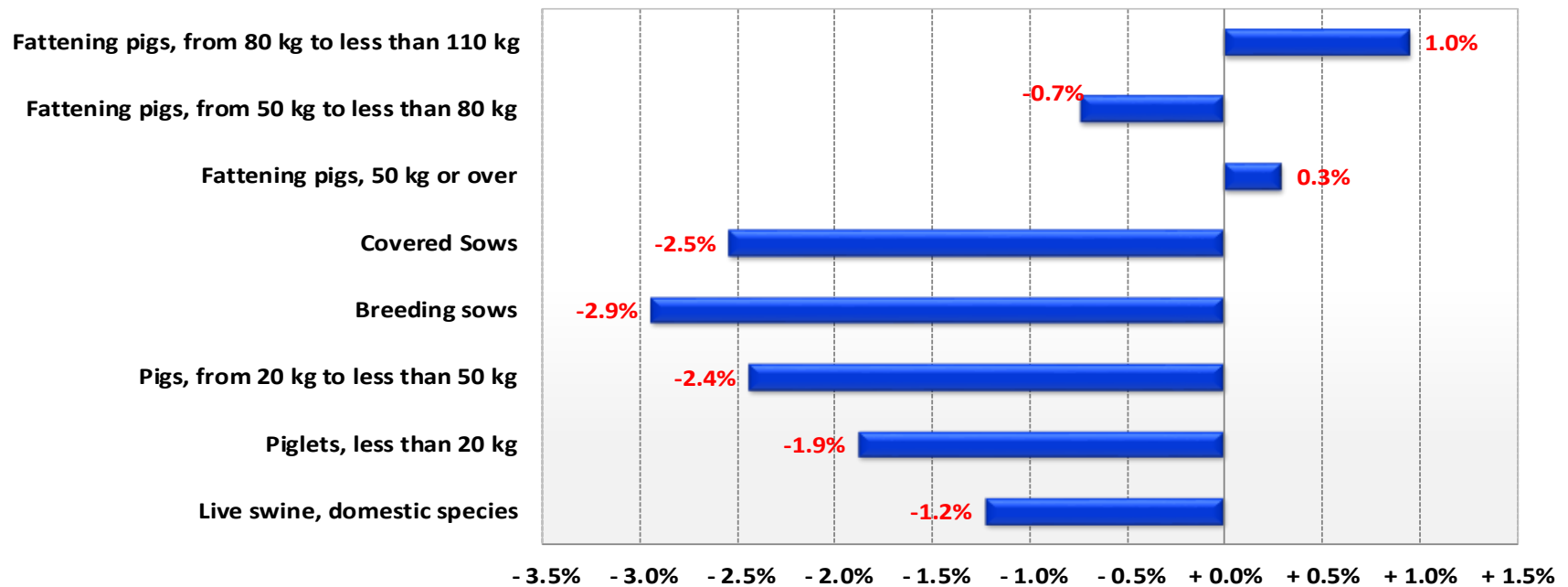
### Pig population - Livestock survey December 2018



Source: Eurostat



### Change in pig population - Livestock survey December 2018 compared to December 2017



Source: Eurostat



European  
Commission



## Pig population/Livestock survey - annual data (In 1 000 heads)

Source : Eurostat annual data (apro\_mt\_1spig)

	Live swine, domestic species				Piglets, less than 20 kg				Breeding pigs				Breeding sows				Covered sows			
	2016	2017	2018	% Var 2018 2017	2016	2017	2018	% Var 2018 2017	2016	2017	2018	% Var 2018 2017	2016	2017	2018	% Var 2018 2017	2016	2017	2018	% Var 2018 2017
BE	6.177	6.108	6.209	+ 1.7%	1.577	1.564	1.597	+ 2.1%	423	416	406	- 2.3%	420	413	403	- 2.4%	346	340	331	- 2.6%
BG	616	593	651	+ 9.7%	121	133	150	+ 12.8%	66	63	71	+ 12.7%	65	62	70	+ 12.6%	40	39	44	+ 12.9%
CZ	1.479	1.532	1.508	- 1.6%	415	477	466	- 2.4%	135	138	135	- 2.2%	134	136	133	- 2.1%	83	85	84	- 1.7%
DK	12.281	12.832	12.642	- 1.5%	4.337	4.582	4.543	- 0.9%	1.247	1.270	1.254	- 1.3%	1.236	1.260	1.243	- 1.3%	765	786	775	- 1.4%
DE	27.376	27.578	26.445	- 4.1%	7.998	8.071	7.672	- 5.0%	1.933	1.930	1.855	- 3.9%	1.908	1.905	1.837	- 3.6%	1.383	1.369	1.314	- 4.0%
EE	266	289	290	+ 0.4%	85	98	105	+ 6.4%	26	27	25	- 6.4%	25	26	24	- 6.2%	20	20	19	- 4.5%
EL	743	744	758	+ 1.9%	195	204	199	- 2.5%	114	107	116	+ 8.4%	106	100	107	+ 7.0%	58	53	56	+ 5.7%
ES	29.232	29.971	30.804	+ 2.8%	8.100	8.365	8.551	+ 2.2%	2.448	2.486	2.529	+ 1.8%	2.415	2.454	2.501	+ 1.9%	1.667	1.623	1.677	+ 3.3%
FR	12.791	13.353	13.713	+ 2.7%	3.122	3.259	3.350	+ 2.8%	994	1.007	1.026	+ 1.9%	986	998	1.018	+ 2.0%	698	702	718	+ 2.3%
HR	1.163	1.121	1.047	- 6.6%	309	259	273	+ 5.4%	123	128	124	- 3.1%	120	125	121	- 3.2%	39	39	39	+ 0.0%
IE	1.528	1.616	1.572	- 2.7%	426	450	437	- 2.9%	147	150	143	- 4.8%	145	149	142	- 4.8%	98	105	97	- 7.7%
IT	8.478	8.571	8.492	- 0.9%	1.375	1.385	1.407	+ 1.6%	587	591	580	- 1.8%	558	562	557	- 0.9%	464	465	464	- 0.2%
CY	353	350	362	+ 3.4%	124	124	128	+ 2.9%	33	34	34	- 0.6%	33	32	34	+ 5.0%	28	29	28	- 1.2%
LV	336	321	305	- 4.9%	76	63	58	- 8.5%	38	36	33	- 8.8%	38	35	33	- 8.0%	17	15	15	+ 1.0%
LT	664	612	572	- 6.5%	124	117	113	- 3.2%	50	50	46	- 8.2%	49	49	45	- 8.1%	41	39	36	- 6.8%
LU	95	91	83	- 9.2%	12	18	17	- 6.6%	7	7	5	- 17.5%	7	7	5	- 18.0%	5	4	4	- 15.9%
HU	2.907	2.870	2.872	+ 0.1%	668	654	690	+ 5.5%	258	254	261	+ 2.8%	255	250	258	+ 3.2%	169	163	166	+ 1.8%
MT	41	34	36	+ 6.7%	10	8	9	+ 3.5%	4	4	4	+ 4.9%	4	3	4	+ 5.2%	3	3	3	+ 2.3%
NL	11.881	12.296	11.934	- 2.9%	4.986	5.522	5.307	- 3.9%	1.025	1.075	978	- 9.0%	1.022	1.066	970	- 9.0%	664	690	642	- 7.0%
AT	2.793	2.820	2.777	- 1.5%	661	668	653	- 2.3%	241	244	233	- 4.5%	236	239	229	- 4.4%	168	170	161	- 5.4%
PL	11.107	11.908	11.028	- 7.4%	2.790	2.723	2.279	- 16.3%	876	925	758	- 18.0%	859	908	745	- 18.0%	582	617	502	- 18.7%
PT	2.151	2.165	2.205	+ 1.8%	709	743	763	+ 2.6%	238	241	241	- 0.1%	233	236	236	+ 0.2%	162	161	163	+ 1.5%
RO	4.708	4.406	4.024	- 8.7%	786	837	769	- 8.1%	367	356	326	- 8.5%	361	350	320	- 8.6%	223	220	200	- 9.0%
SI	266	257	259	+ 0.7%	58	59	58	- 1.1%	20	21	19	- 9.2%	19	20	19	- 8.9%	11	12	11	- 12.9%
SK	586	614	628	+ 2.2%	171	186	170	- 8.7%	51	58	54	- 6.7%	51	57	53	- 7.5%	20	29	33	+ 10.9%
FI	1.197	1.108	1.041	- 6.1%	342	312	273	- 12.5%	110	101	97	- 3.9%	108	99	95	- 3.9%	78	70	72	+ 2.0%
SE	1.436	1.382	1.417	+ 2.5%	407	379	355	- 6.3%	142	133	125	- 6.3%	140	132	123	- 6.4%	98	90	81	- 10.1%
UK	4.538	4.713	4.746	+ 0.7%	1.184	1.244	1.320	+ 6.1%	505	503	496	- 1.4%	490	490	484	- 1.2%	346	346	341	- 1.4%
EU	147.188	150.257	148.420	- 1.2%	41.166	42.507	41.711	- 1.9%	12.208	12.354	11.974	- 3.1%	12.022	12.164	11.807	- 2.9%	8.274	8.286	8.076	- 2.5%



European  
Commission



## Pig population/Livestock survey - annual data (In 1 000 heads)

	Sows covered for the first time			% Var 2018 2017	Sows, not covered			% Var 2018 2017	Gilts not yet covered			% Var 2018 2017	Pigs, from 20 kg to less than 50 kg			% Var 2018 2017	Fattening pigs, 50 kg or over			% Var 2018 2017
	2016	2017	2018		2016	2017	2018		2016	2017	2018		2016	2017	2018		2016	2017	2018	
BE	68	63	60	-4.3%	74	73	72	-1.2%	37	36	39	+7.1%	1.118	1.248	1.282	+2.8%	3.058	2.881	2.924	+1.5%
BG	9	11	11	-0.4%	25	23	26	+12.2%	8	7	8	+18.0%	151	141	154	+9.2%	278	256	275	+7.6%
CZ	19	19	21	+7.8%	50	51	49	-2.6%	23	23	23	+2.5%	357	346	321	-7.3%	572	571	586	+2.7%
DK	187	192	190	-1.0%	471	474	468	-1.3%	234	225	223	-0.9%	3.785	3.971	3.937	-0.9%	2.912	3.009	2.908	-3.4%
DE	225	221	209	-5.7%	525	537	523	-2.6%	217	226	226	+0.0%	5.189	5.337	5.049	-5.4%	12.255	12.240	11.870	-3.0%
EE	3	3	3	-10.3%	6	6	6	-11.3%	4	4	4	-15.9%	60	52	42	-19.7%	95	112	119	+6.1%
EL	15	14	16	+14.3%	48	46	51	+10.9%	11	13	13	+0.0%	164	167	171	+2.4%	270	266	272	+2.3%
ES	250	268	261	-2.5%	748	831	824	-0.9%	247	302	289	-4.4%	6.397	7.058	6.897	-2.3%	12.285	12.062	12.827	+6.3%
FR	121	125	125	+0.0%	288	296	299	+1.0%	108	112	112	+0.0%	3.504	3.652	3.763	+3.0%	5.171	5.436	5.574	+2.5%
HR	9	8	8	+0.0%	81	86	82	-4.7%	11	15	15	+0.0%	248	252	228	-9.5%	483	482	422	-12.4%
IE	19	21	19	-7.0%	48	44	45	+2.1%	16	15	15	+3.6%	410	417	417	+0.0%	545	599	575	-4.0%
IT	99	106	101	-4.1%	94	96	93	-3.8%	56	57	54	-6.0%	1.602	1.624	1.611	-0.8%	4.914	4.971	4.894	-1.5%
CY	5	5	5	-0.4%	5	5	6	+21.5%	3	3	4	+33.3%	75	75	72	-4.7%	121	117	128	+9.6%
LV	5	4	5	+13.4%	21	20	17	-14.9%	11	10	10	-5.3%	92	96	97	+0.7%	130	125	117	-6.2%
LT	7	7	6	-4.5%	8	11	9	-13.2%	6	7	5	-23.5%	174	167	152	-9.2%	316	278	261	-6.0%
LU	1	1	1	-24.3%	2	2	2	-22.5%	1	1	1	-7.1%	36	26	26	+2.9%	41	40	34	-16.7%
HU	39	35	36	+2.9%	86	87	92	+5.7%	38	44	44	+0.0%	624	601	637	+6.0%	1.356	1.362	1.285	-5.7%
MT	0	0	0	-2.1%	0	0	1	+29.3%	0	0	1	+29.3%	9	8	9	+8.5%	17	14	15	+8.1%
NL	128	128	108	-15.6%	358	376	328	-12.8%	157	165	134	-18.8%	1.730	1.731	1.617	-6.6%	4.140	3.967	4.033	+1.7%
AT	25	24	22	-7.4%	68	69	67	-1.9%	22	23	22	-2.0%	744	737	715	-3.0%	1.148	1.172	1.176	+0.4%
PL	98	104	76	-27.1%	277	291	243	-16.5%	45	51	41	-20.6%	3.170	3.508	3.229	-8.0%	4.271	4.752	4.762	+0.2%
PT	27	29	29	-0.2%	71	75	73	-2.7%	22	24	25	+1.2%	485	475	455	-4.3%	719	705	746	+5.8%
RO	50	52	47	-9.2%	138	130	120	-8.0%	54	54	49	-7.7%	1.017	878	807	-8.1%	2.538	2.335	2.122	-9.1%
SI	2	2	2	-10.2%	8	8	8	-3.0%	2	2	2	-5.7%	51	47	53	+13.1%	137	130	129	-1.2%
SK	4	5	6	+14.3%	31	28	20	-27.0%	11	15	7	-50.9%	161	156	168	+7.7%	203	214	236	+10.2%
FI	14	13	11	-14.0%	31	29	24	-18.3%	16	19	13	-28.5%	256	249	246	-0.9%	489	447	425	-4.9%
SE	65	66	58	-12.1%	42	41	42	+1.7%	25	24	23	-3.0%	354	341	369	+8.4%	534	530	568	+7.3%
UK	59	59	61	+3.4%	145	145	143	-1.4%	82	83	83	+0.0%	1.165	1.213	1.209	-0.3%	1.685	1.754	1.722	-1.8%
EU	1.553	1.583	1.495	-5.5%	3.749	3.880	3.731	-3.8%	1.468	1.560	1.485	-4.8%	33.128	34.572	33.731	-2.4%	60.685	60.827	61.006	+0.3%

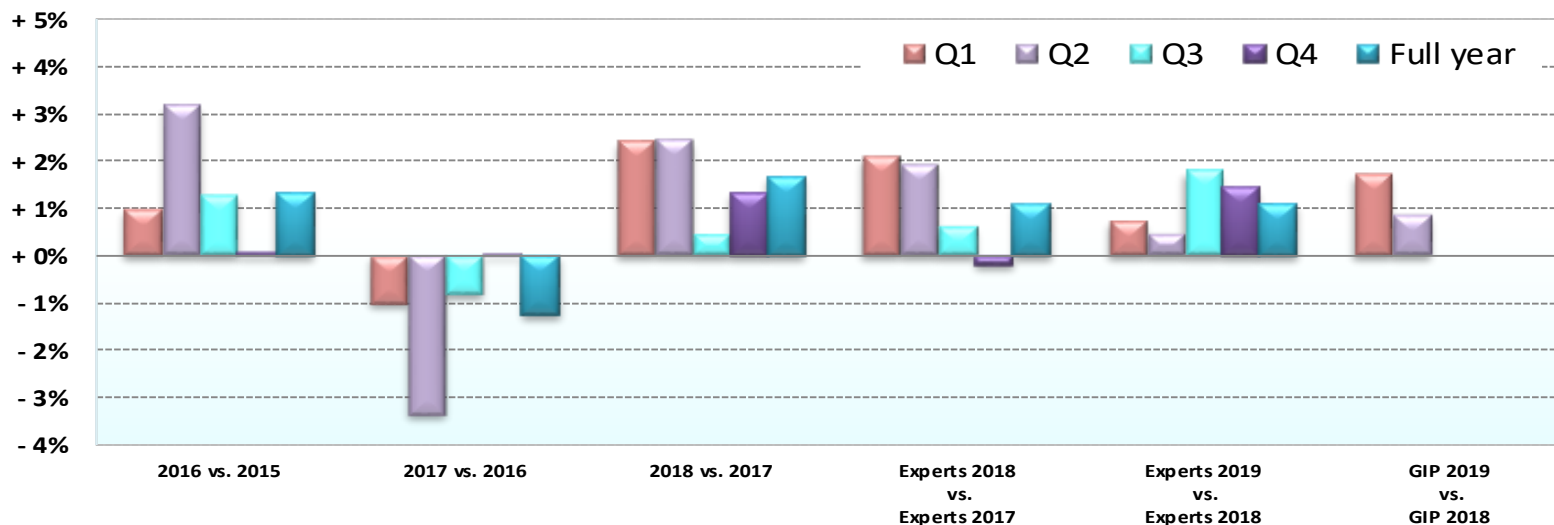


## Pig population/Livestock survey - annual data (In 1 000 heads)

	Fattening pigs, from 50 kg to less than 80			% Var 2018 2017	Fattening pigs, from 80 kg to less than 110			% Var 2018 2017	Fattening pigs, 110 kg or over			% Var 2018 2017	Breeding boars			% Var 2018 2017
	2016	2017	2018		2016	2017	2018		2016	2017	2018		2016	2017	2018	
BE	1.490	1.342	1.372	+ 2.2%	1.349	1.267	1.277	+ 0.8%	218	272	275	+ 1.2%	4	3	3	+ 7.5%
BG	132	125	129	+ 3.2%	126	122	137	+ 12.6%	20	9	9	+ 0.8%	1	1	1	+ 17.8%
CZ	291	264	280	+ 6.3%	224	240	239	- 0.3%	57	68	67	- 0.8%	2	2	2	- 10.6%
DK	2.325	2.402	2.321	- 3.4%	581	600	580	- 3.3%	6	7	7	+ 0.0%	11	11	11	+ 0.0%
DE	5.561	5.500	5.360	- 2.6%	5.465	5.516	5.284	- 4.2%	1.229	1.224	1.227	+ 0.2%	25	24	18	- 26.2%
EE	50	63	51	- 18.9%	38	33	50	+ 50.6%	7	16	18	+ 12.6%	1	1	0	- 20.0%
EL	131	129	131	+ 1.6%	109	108	114	+ 5.6%	30	30	27	- 10.0%	8	7	9	+ 28.6%
ES	5.146	4.943	5.138	+ 3.9%	5.577	5.570	6.083	+ 9.2%	1.563	1.549	1.605	+ 3.6%	33	31	29	- 8.0%
FR	2.418	2.463	2.547	+ 3.4%	2.135	2.306	2.298	- 0.3%	618	667	729	+ 9.3%	9	9	8	- 11.1%
HR	157	145	150	+ 3.4%	149	153	113	- 26.1%	177	184	159	- 13.6%	3	3	3	+ 0.0%
IE	286	323	316	- 2.1%	250	266	245	- 7.8%	9	10	14	+ 33.8%	1	1	1	- 0.8%
IT	1.211	1.254	1.283	+ 2.3%	1.452	1.464	1.426	- 2.6%	2.251	2.253	2.185	- 3.0%	29	29	23	- 20.4%
CY	63	62	67	+ 8.2%	57	55	59	+ 8.6%	1	0	2	+ 315.2%	0	0	0	- 8.3%
LV	77	65	65	- 0.3%	46	55	48	- 13.6%	8	5	5	- 1.9%	1	1	0	- 43.2%
LT	168	147	122	- 17.1%	100	94	108	+ 14.8%	48	37	31	- 14.7%	1	1	1	- 16.7%
LU	17	19	16	- 15.7%	18	13	14	+ 7.9%	7	8	3	- 57.5%	0	0	0	+ 12.5%
HU	556	562	508	- 9.6%	518	491	497	+ 1.2%	283	309	281	- 9.1%	4	4	3	- 25.0%
MT	9	8	9	+ 4.9%	7	4	5	+ 18.1%	1	1	1	- 12.4%	0	0	0	+ 0.0%
NL	1.827	1.787	1.666	- 6.8%	1.711	1.618	1.679	+ 3.8%	602	563	687	+ 22.0%	3	9	8	- 11.1%
AT	566	554	554	- 0.1%	458	488	488	+ 0.0%	124	130	135	+ 3.9%	4	4	4	- 10.9%
PL	2.076	2.314	2.268	- 2.0%	1.789	1.955	1.944	- 0.6%	407	482	550	+ 14.1%	17	17	14	- 19.4%
PT	377	372	385	+ 3.5%	303	304	327	+ 7.7%	38	30	35	+ 15.0%	5	6	5	- 12.5%
RO	837	749	680	- 9.1%	955	837	759	- 9.2%	746	749	682	- 9.0%	6	7	6	- 4.6%
SI	36	34	36	+ 7.5%	40	38	37	- 1.9%	62	59	55	- 5.8%	1	1	1	- 17.9%
SK	99	94	105	+ 12.2%	83	98	104	+ 6.1%	21	23	27	+ 19.5%	1	1	1	+ 39.1%
FI	226	232	205	- 11.5%	206	171	179	+ 4.6%	58	44	41	- 6.4%	2	1	1	+ 0.0%
SE	254	231	239	+ 3.3%	182	218	231	+ 5.9%	99	80	98	+ 22.7%	2	2	1	- 6.7%
UK	996	1.036	1.016	- 1.9%	636	661	653	- 1.2%	53	56	53	- 5.4%	14	12	12	+ 0.0%
EU	27.382	27.220	27.019	- 0.7%	24.563	24.744	24.979	+ 1.0%	8.741	8.864	9.008	+ 1.6%	187	188	167	- 11.1%



**Change in EU pigmeat slaughter (2019 forecast based on GIP and experts estimations) ('000 heads)**

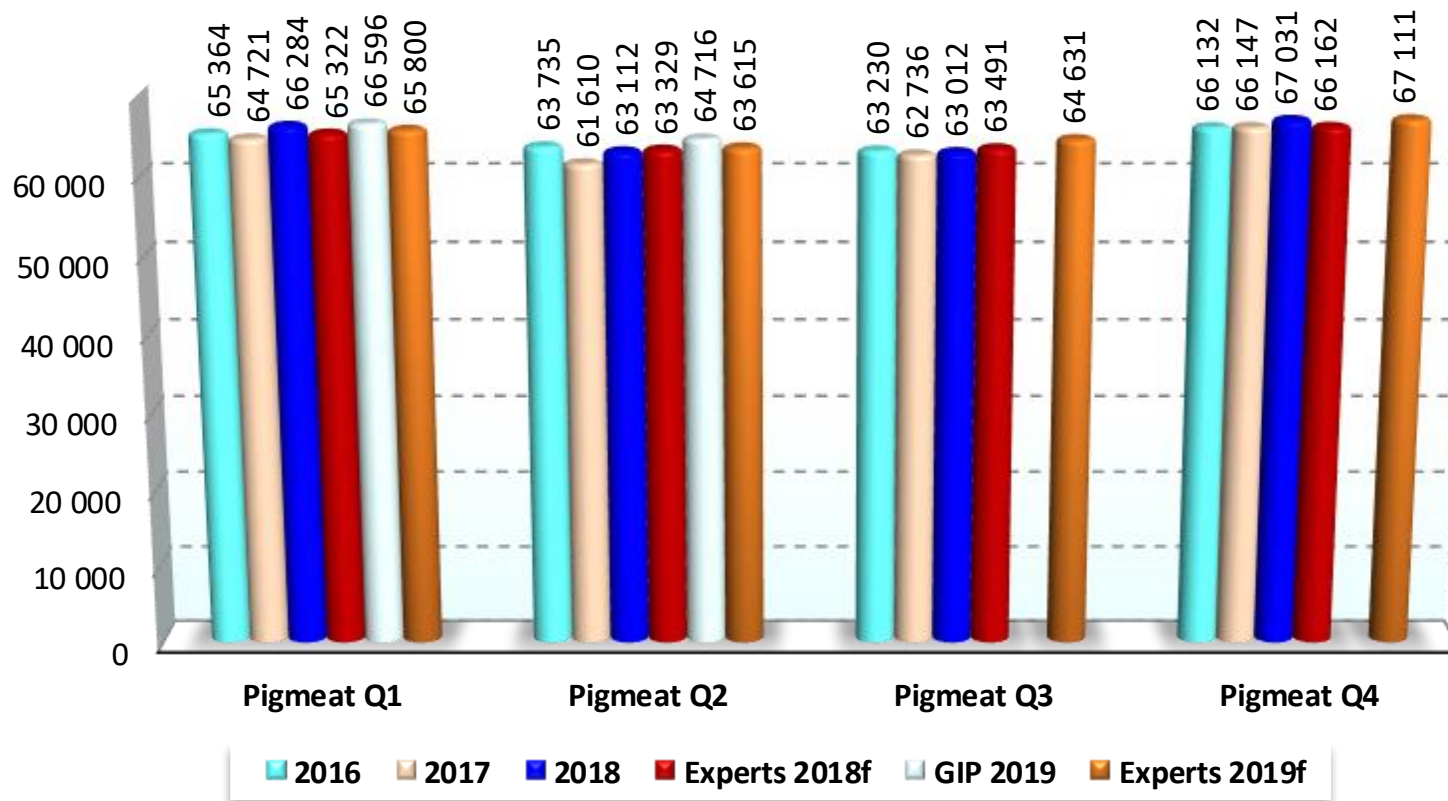


	Real Slaughter				Experts 2018 vs. Experts 2017	Experts 2019 vs. Experts 2018
	2016 vs. 2015	2017 vs. 2016	2018 vs. 2017			
<b>Q1</b>	+ 1.0%	- 1.0%	+ 2.4%		<b>+ 2.1%</b>	<b>+ 0.7%</b>
<b>Q2</b>	+ 3.2%	- 3.3%	+ 2.4%		<b>+ 1.9%</b>	<b>+ 0.5%</b>
<b>Q3</b>	+ 1.2%	- 0.8%	+ 0.4%		<b>+ 0.6%</b>	<b>+ 1.8%</b>
<b>Q4</b>	+ 0.1%	+ 0.0%	+ 1.3%		<b>- 0.2%</b>	<b>+ 1.4%</b>
<b>Full year</b>	↑ <b>+ 1.3%</b>	↓ <b>- 1.3%</b>	↑ <b>+ 1.7%</b>	↑ <b>+ 1.1%</b>	↑ <b>+ 1.1%</b>	



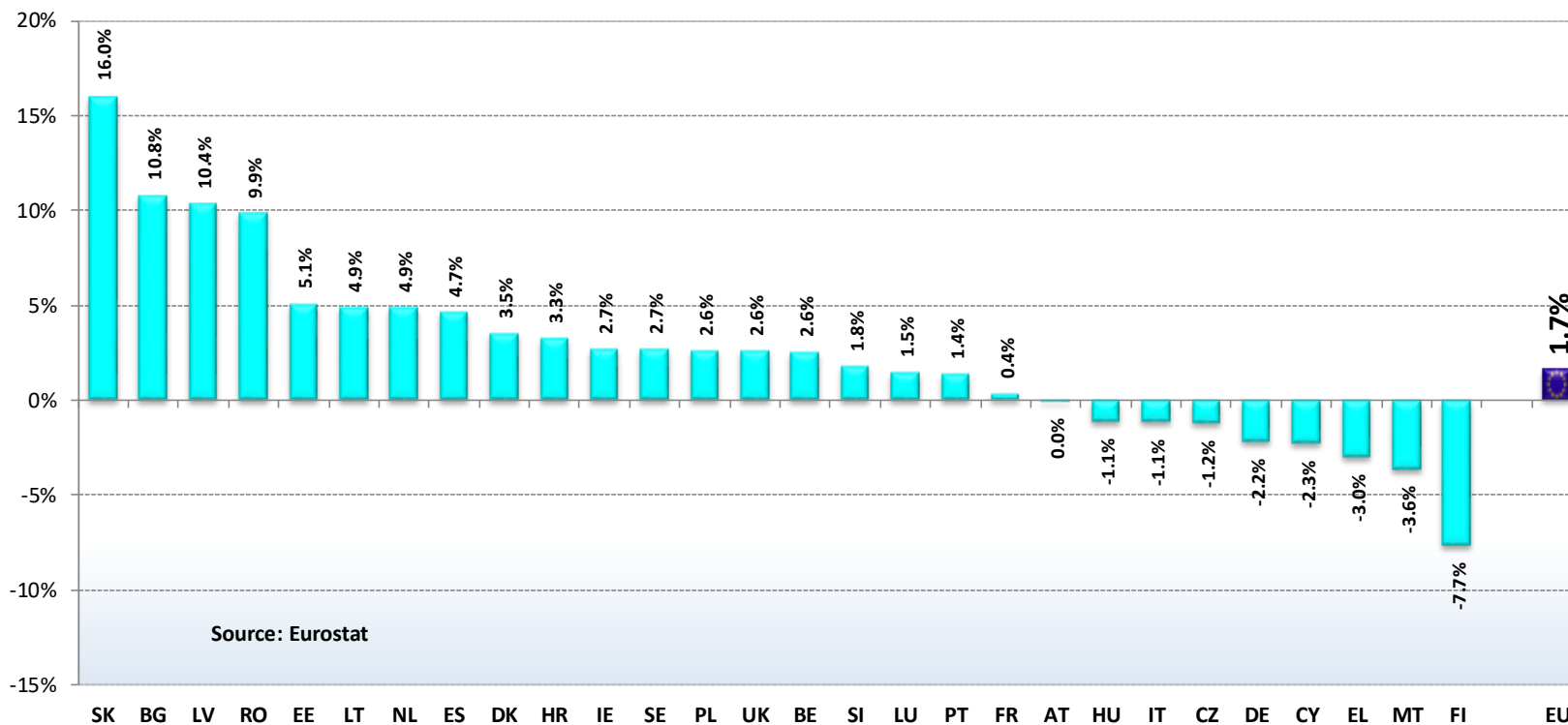


**EU pigmeat slaughter in 2016-2018, GIP and expert estimations for 2018 and 2019 ('1000 heads)**



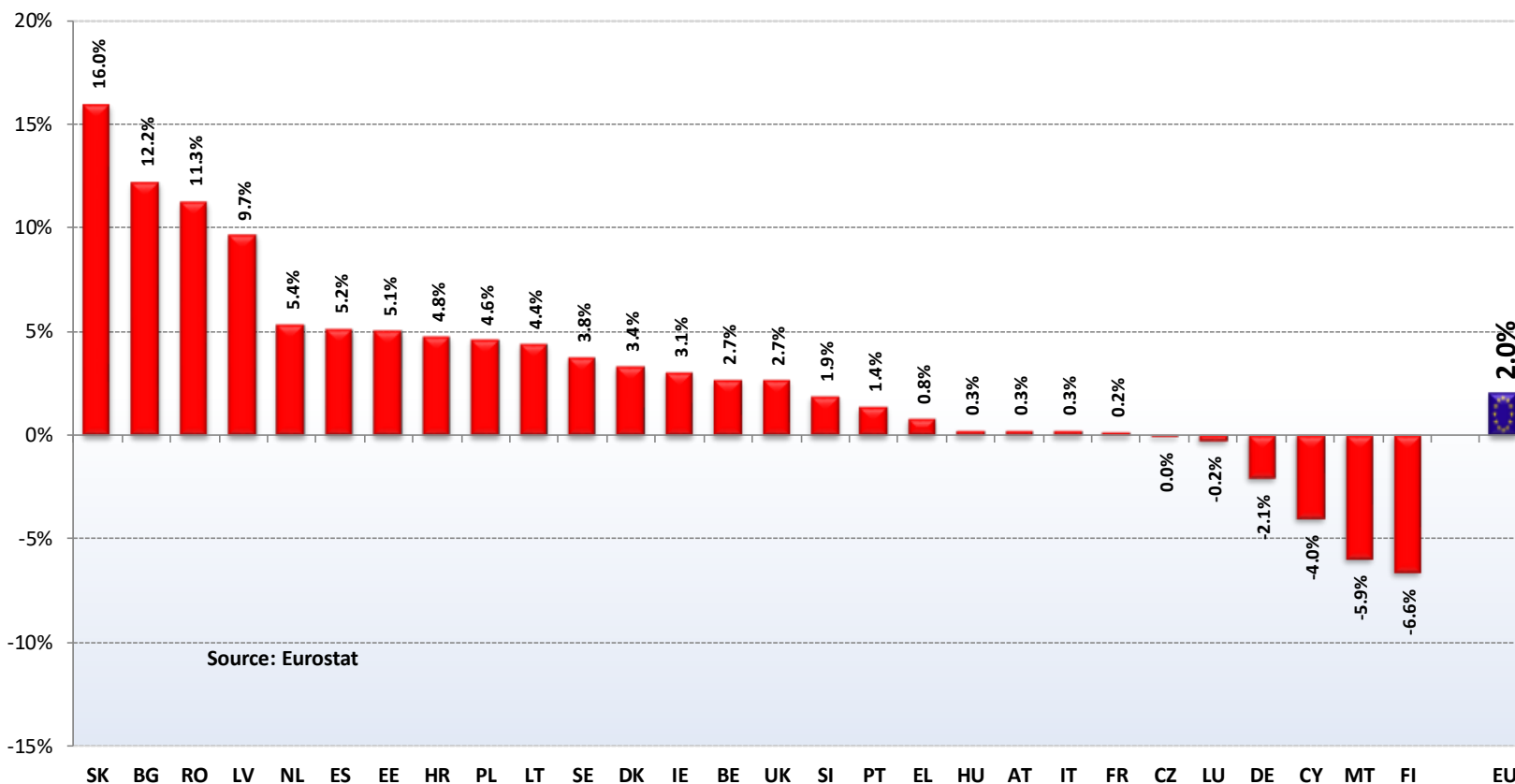


## Change in Pig Slaughter ('000 Heads) 2018/2017 (up to December)



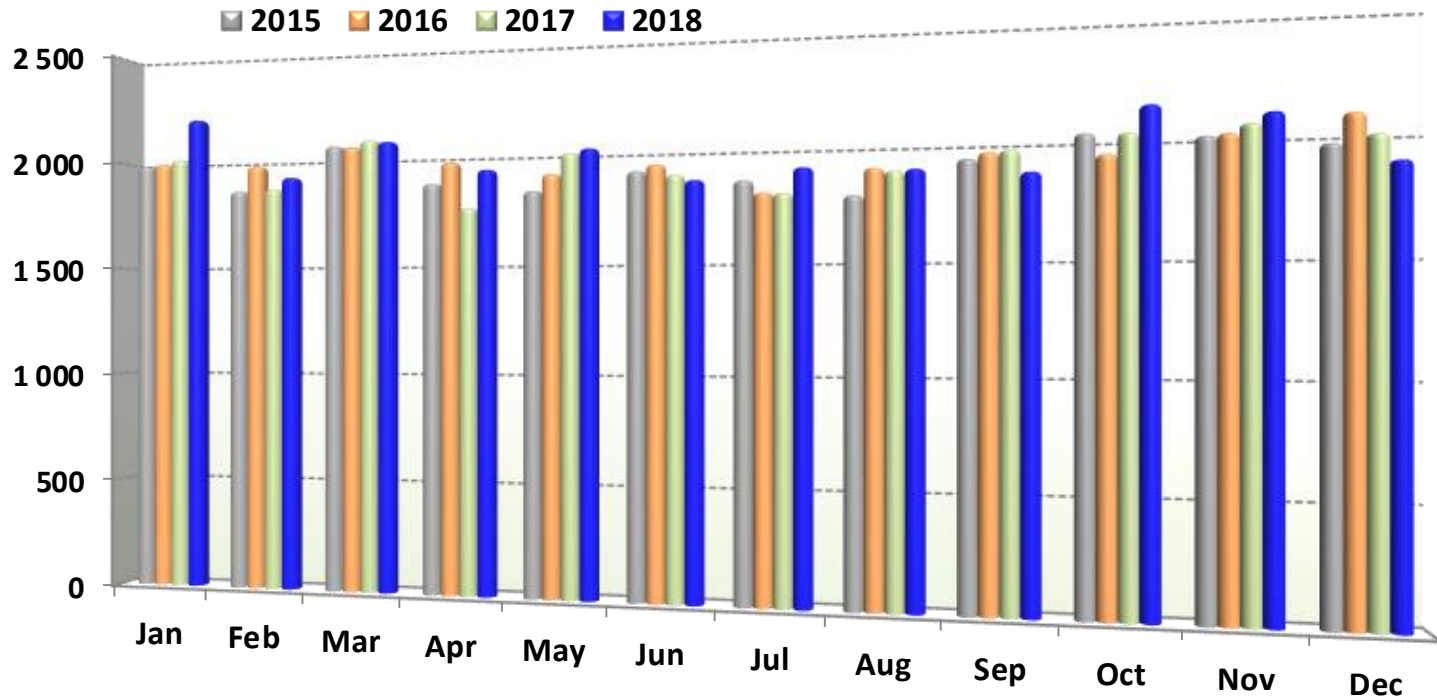


**Change in Pig Slaughter ('000 tonnes)  
2018/2017 (up to December)**





## Pig Production (E28 Slaughtering) - Tonnes



Source: Eurostat



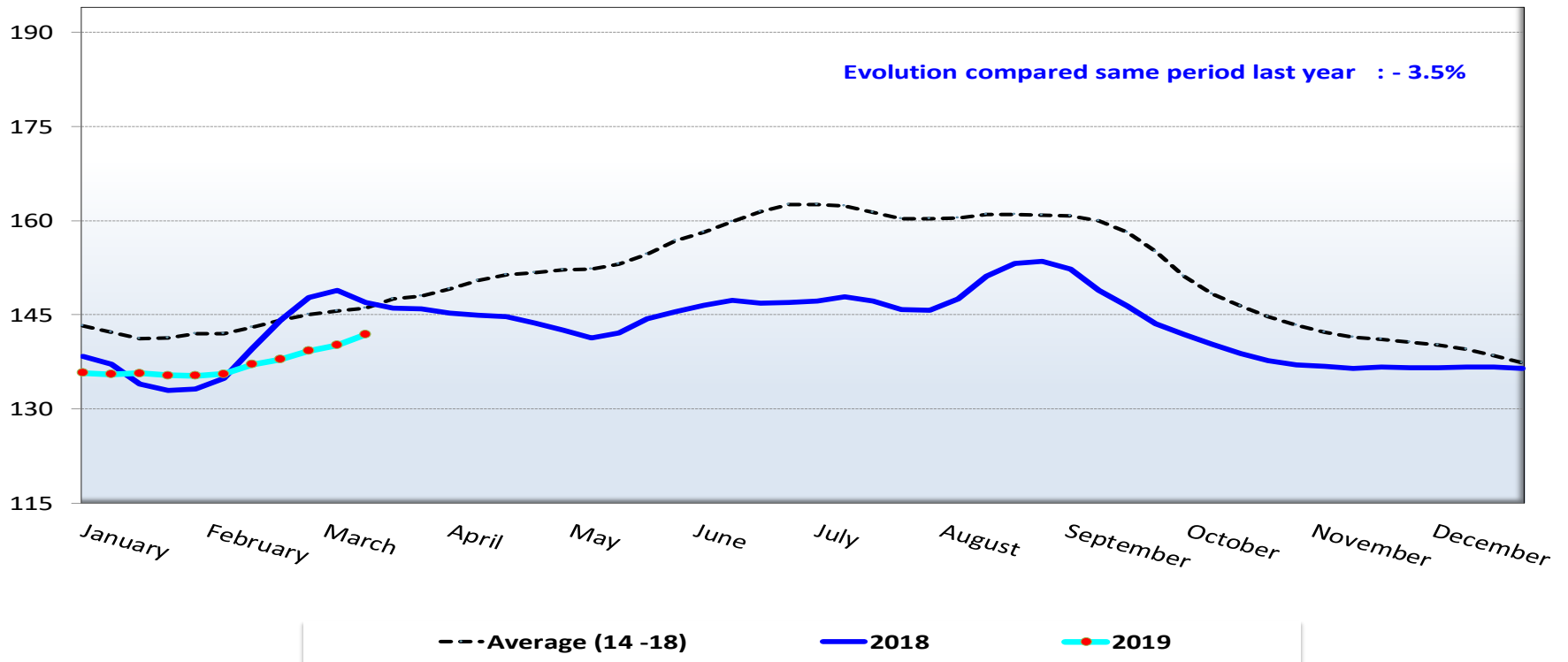
EU Prices	EU Prices	11	Evolution since last week	Evolution since last month	Evolution since last year
	Average (S-E)	141.9	+ 1.2%	+ 3.5%	- 3.5%
	Class S	143.2	+ 1.3%	+ 3.9%	- 3.0%
	Class E	139.4	+ 1.1%	+ 2.7%	- 4.4%
	Piglet	46.9	+ 0.6%	+ 5.7%	- 9.3%

€/100 kg carcass weight

€/head

## EU evolution of the EU pig carcass prices (average class E & S) (€/ 100kg/cw)

**Week 11 latest price ==> 141.86 EUR/100 kg/cw**



# PRICES CARCASSES



# EU EVOLUTION

## Classe E

	Feb-2018	Feb-2019
EL	167.68	170.46
FI	156.79	165.18
SE	172.68	164.00
CY	164.87	162.84
UK	163.38	160.15
BG	177.58	158.54
SI	152.25	149.90
EE	142.63	145.90
DE	146.43	143.10
AT	147.72	142.21
PT	150.32	141.50
HU	146.47	141.40
HR	143.38	141.24
SK	146.44	140.68
CZ	136.00	137.71
IE	138.45	137.31
LV	141.44	130.73
ES	127.08	130.56
DK	124.96	129.26
FR	125.71	129.14
PL	140.83	127.48
LT	143.70	124.78
NL	124.83	123.52
RO	139.31	109.95
BE	117.32	105.90
IT	167.99	
LU	142.71	

**EU 140.80 135.61**

## Classe S

	Feb-2018	Feb-2019
FI	162.09	171.30
EL	167.68	170.46
SE	175.50	166.70
UK	166.86	162.68
SI	165.08	159.97
AT	159.55	154.04
EE	145.84	149.75
DE	148.70	146.11
SK	146.89	144.54
HU	150.18	144.12
HR	143.64	142.19
CZ	140.37	141.49
PT	150.07	140.50
IE	139.33	138.65
FR	133.71	137.00
ES	131.14	134.59
DK	131.51	134.40
PL	143.50	130.53
LV	137.51	130.37
LT	146.18	128.03
NL	125.97	124.66
BE	126.75	113.49
RO	141.16	109.20
LU	149.44	

**EU 139.23 137.85**

## Classe R

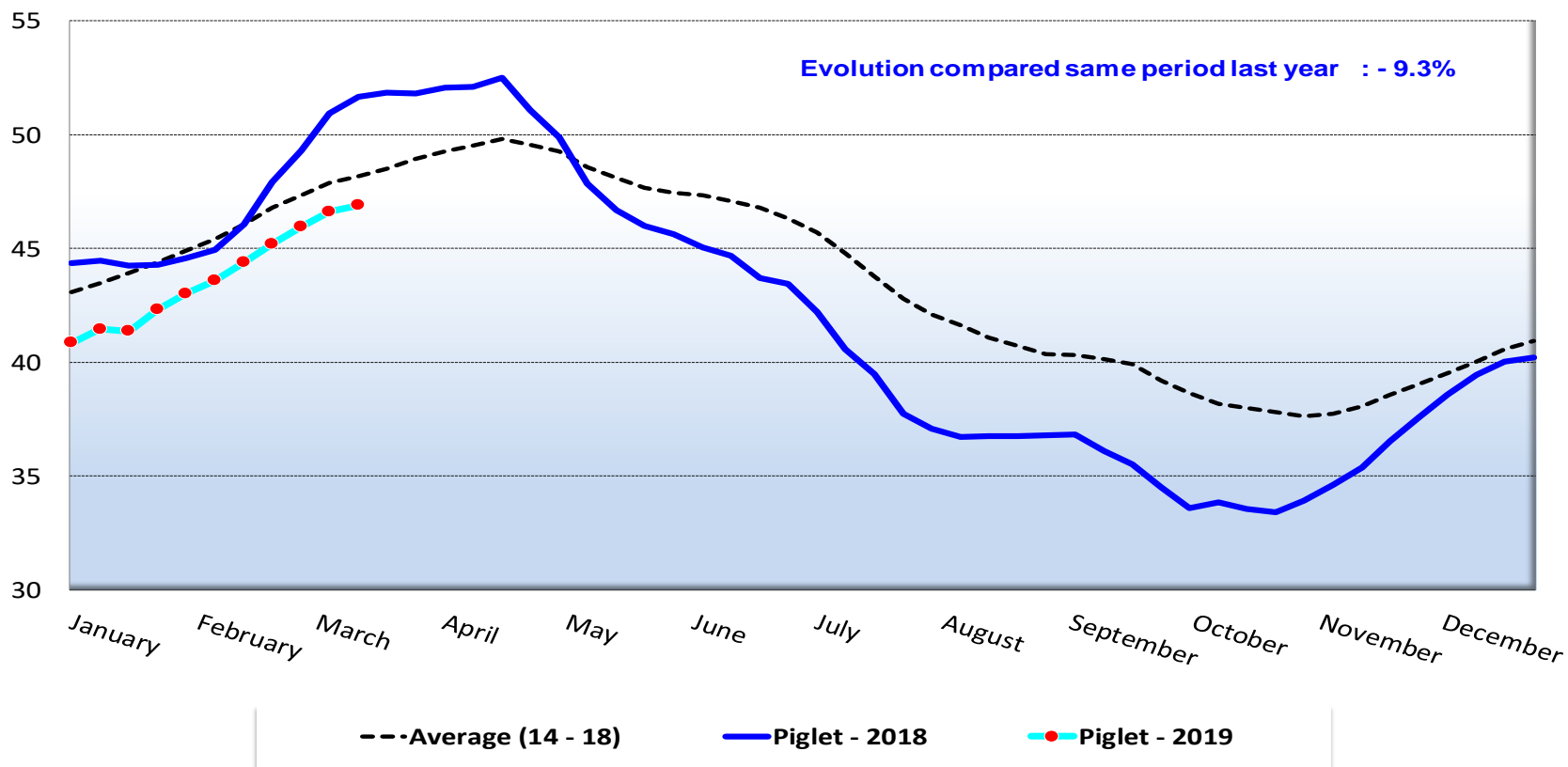
	Feb-2018	Feb-2019
IT	194.19	166.03
FI	132.34	140.97
SK	138.06	133.72
ES	135.57	133.27
LV	128.39	123.52
DE	118.27	115.63
LT	133.71	115.30
UK	143.40	111.64
DK		97.55
LU	125.73	

**EU 135.61 124.31**



## EU evolution of the EU average piglet prices (€/head)

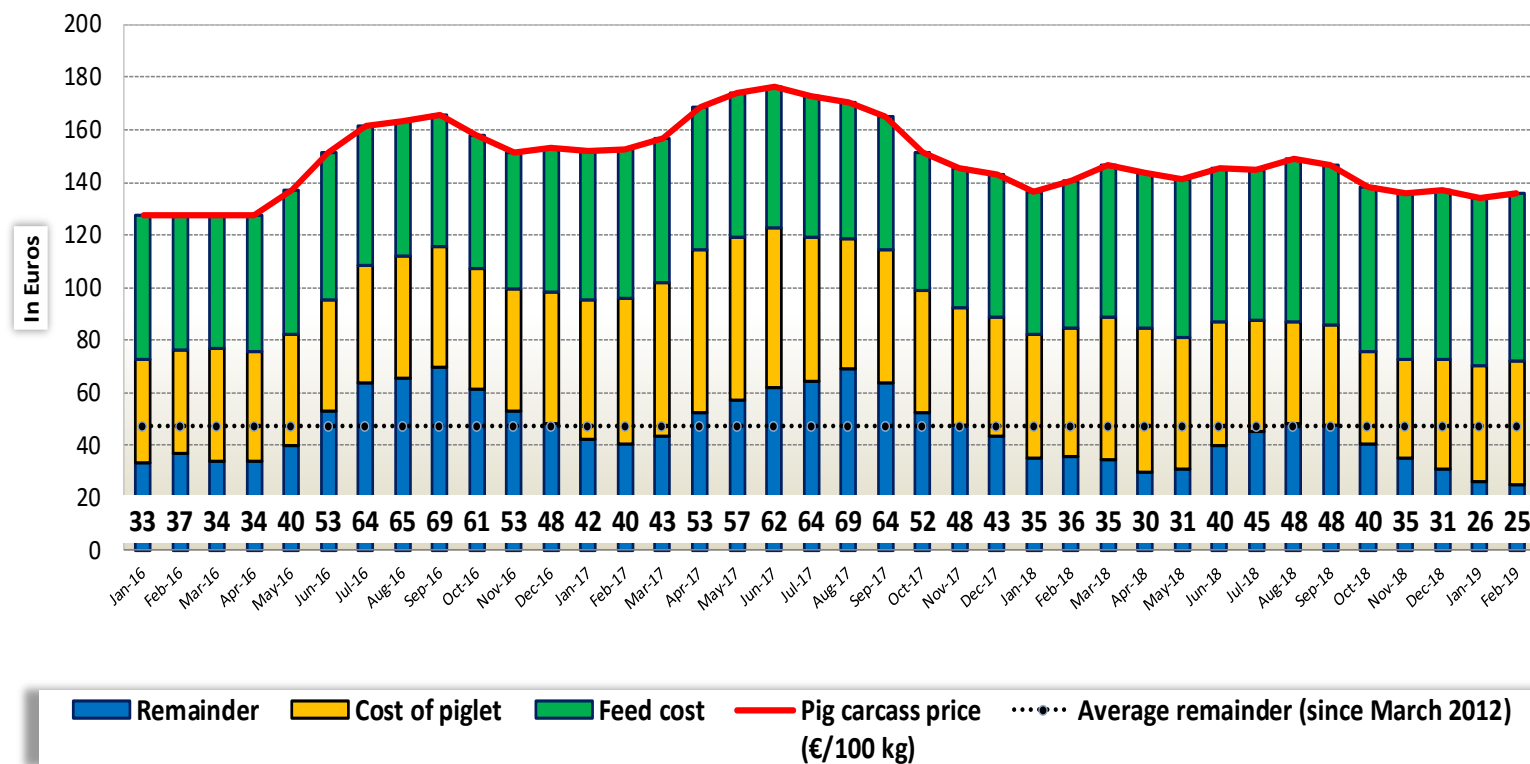
Week 11 latest price ==> 46.89 EUR/head





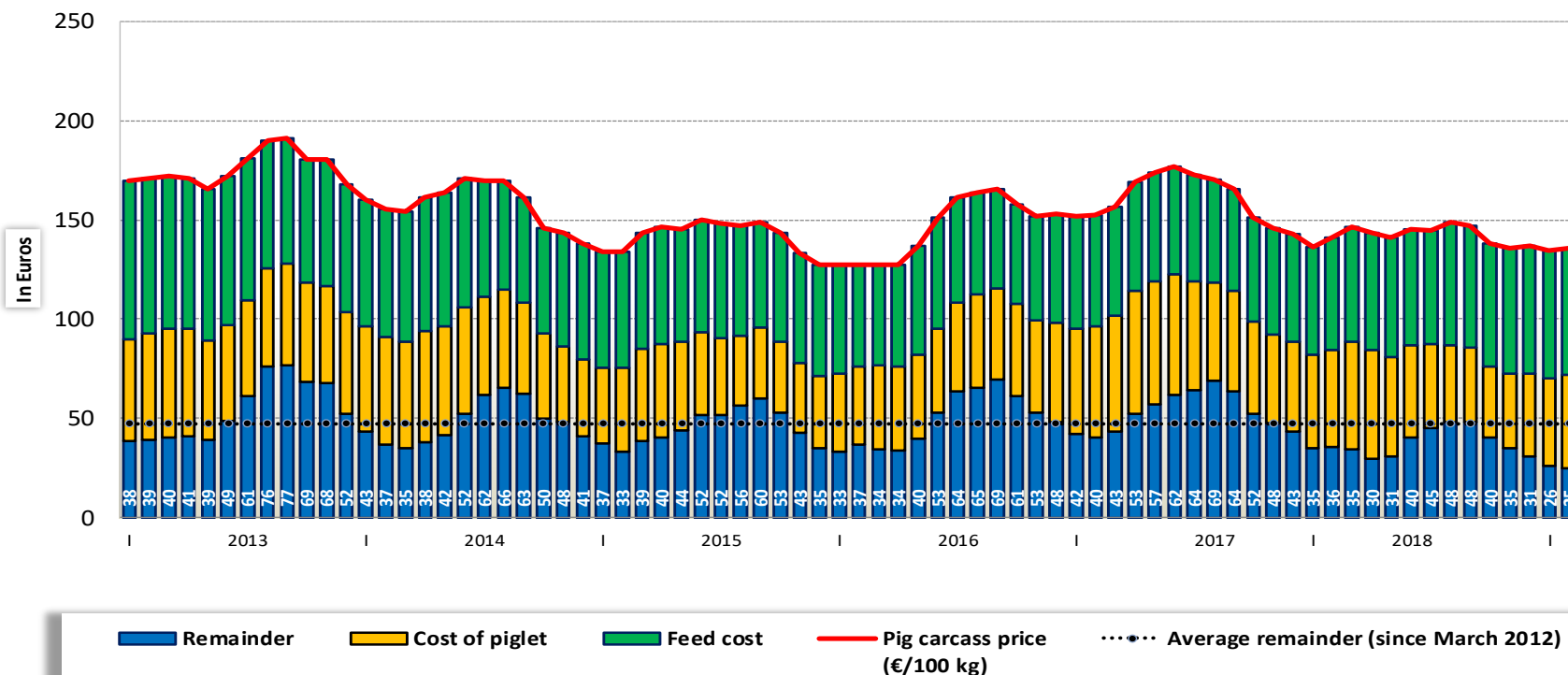


## Remainder for pig fattening





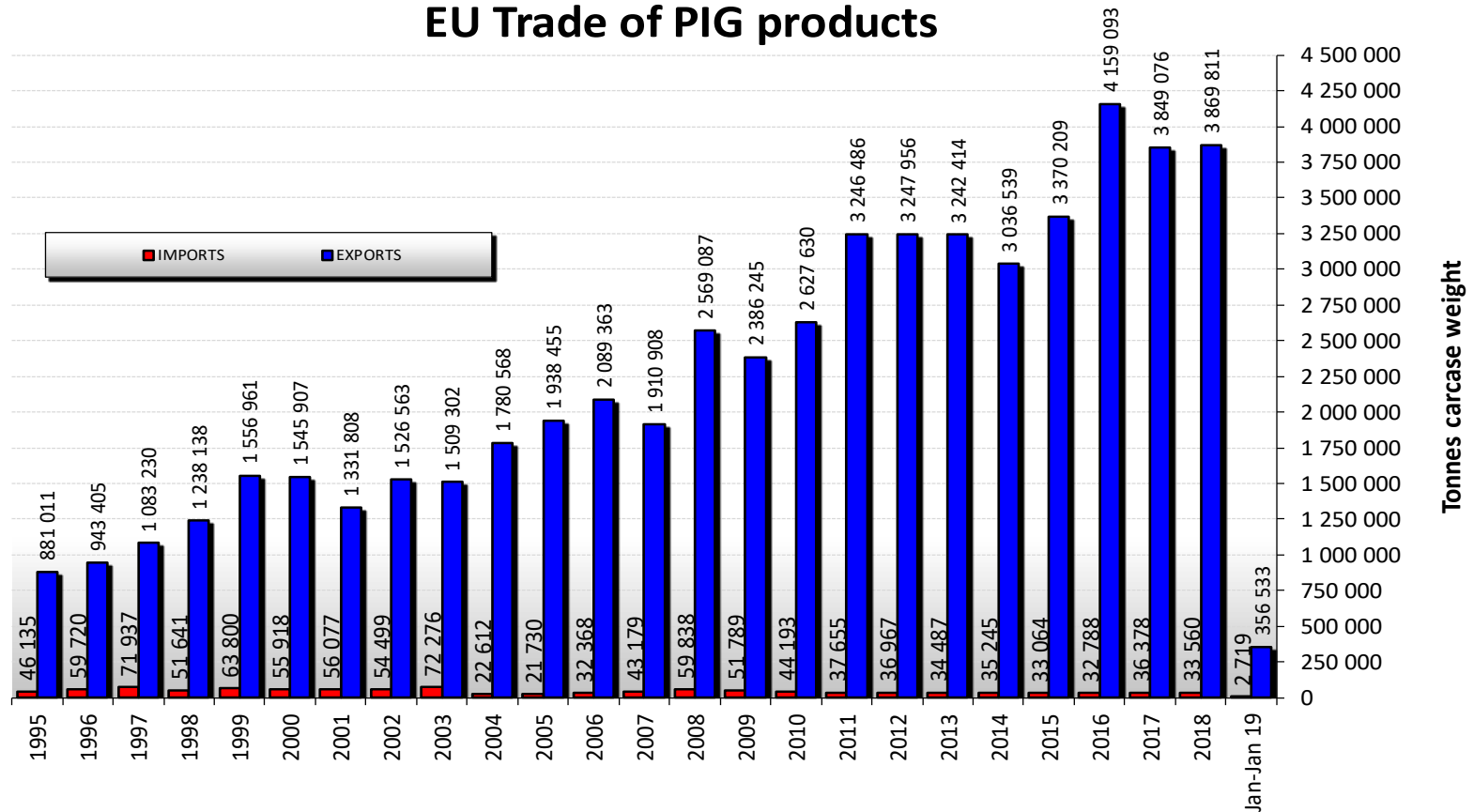
## Remainder for pig fattening





## EU trade of PIG products

### EU Trade of PIG products





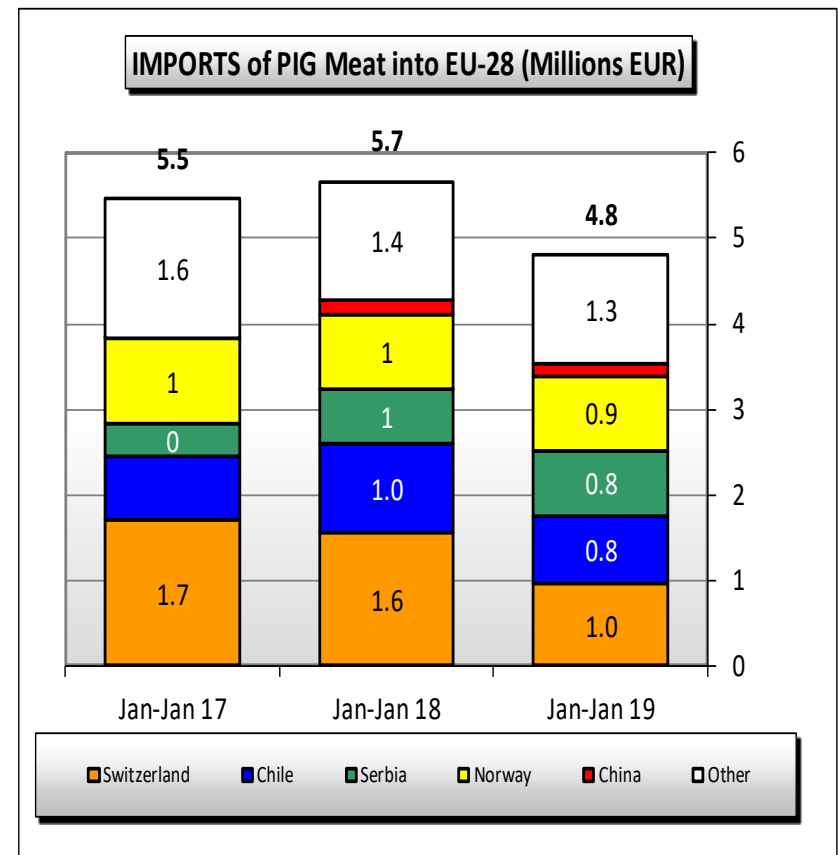
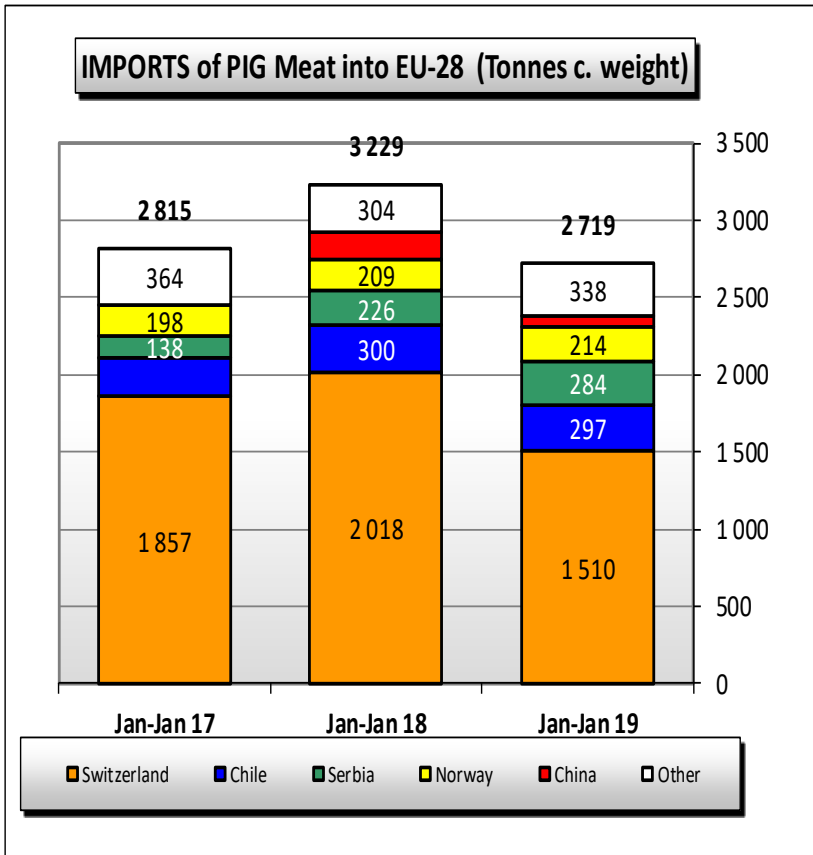
## EU imports of selected PIG products Trade figures (COMEXT – tonnes carcass weight)

### IMPORT

	2015		2016		2017		2018		Jan-Jan 19		Compared to Jan- Jan 18
	tonnes	%	tonnes	%	tonnes	%	tonnes	%	tonnes	%	
Switzerland	20 225	61%	22 257	68%	22 922	63%	19 430	58%	1 510	56%	-25%
Chile	2 896	9%	2 958	9%	2 434	7%	2 664	8%	297	11%	-1%
Serbia	1 819	6%	614	2%	2 694	7%	3 618	11%	284	10%	26%
Norway	2 315	7%	1 989	6%	2 297	6%	2 702	8%	214	8%	2%
USA	1 769	5%	1 711	5%	1 707	5%	1 561	5%	103	4%	19%
China	378	1%	250	1%	1 315	4%	841	3%	75	3%	-56%
Other	3 663	11%	3 010	9%	3 010	8%	2 745	8%	235	9%	
Extra-EU	33 064		32 788		36 378		33 560		2 719		
% change			- 1%		+ 11%		- 8%		- 15.8%		

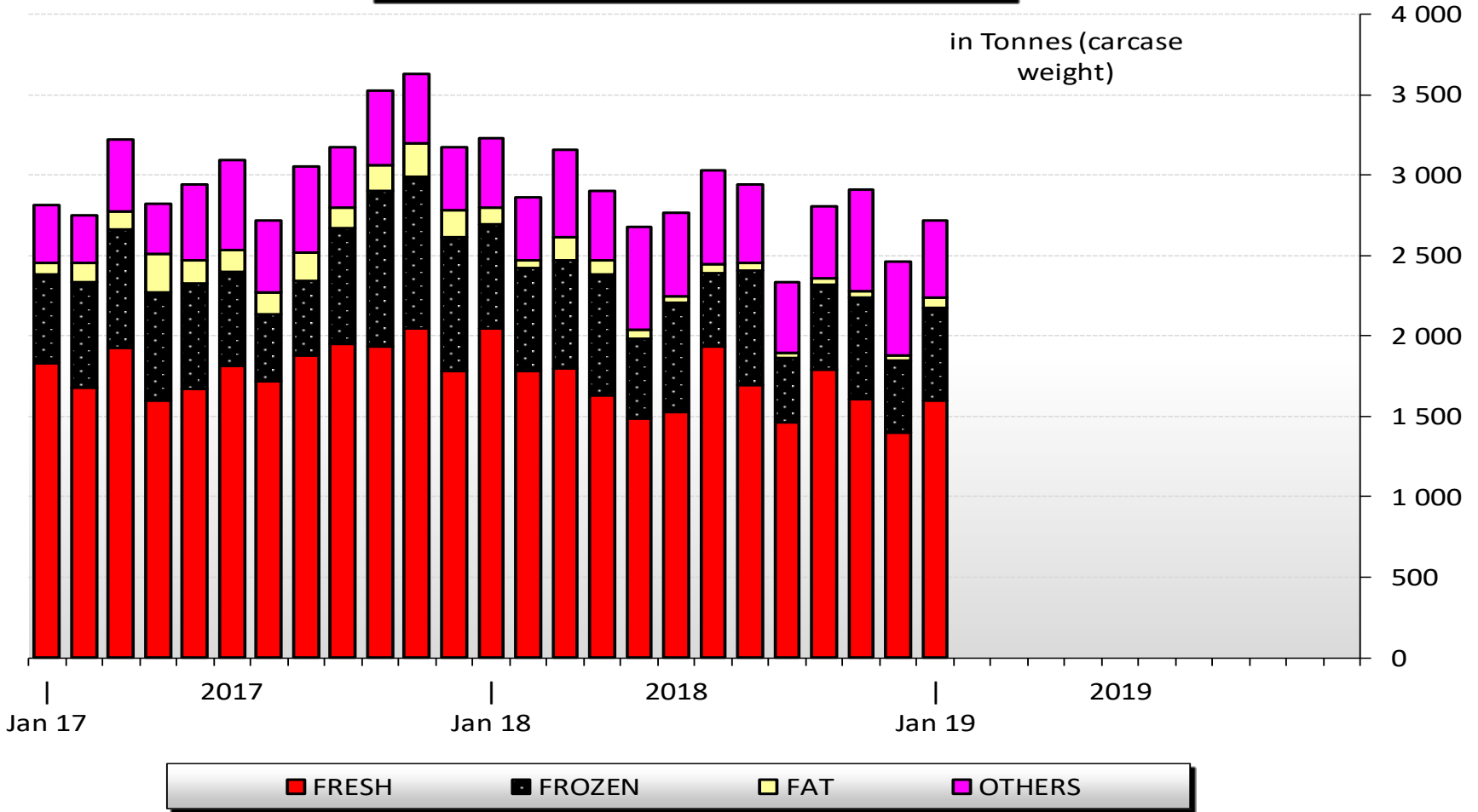


## EU imports of selected PIG products Trade figures (COMEXT – tonnes carcass weight)



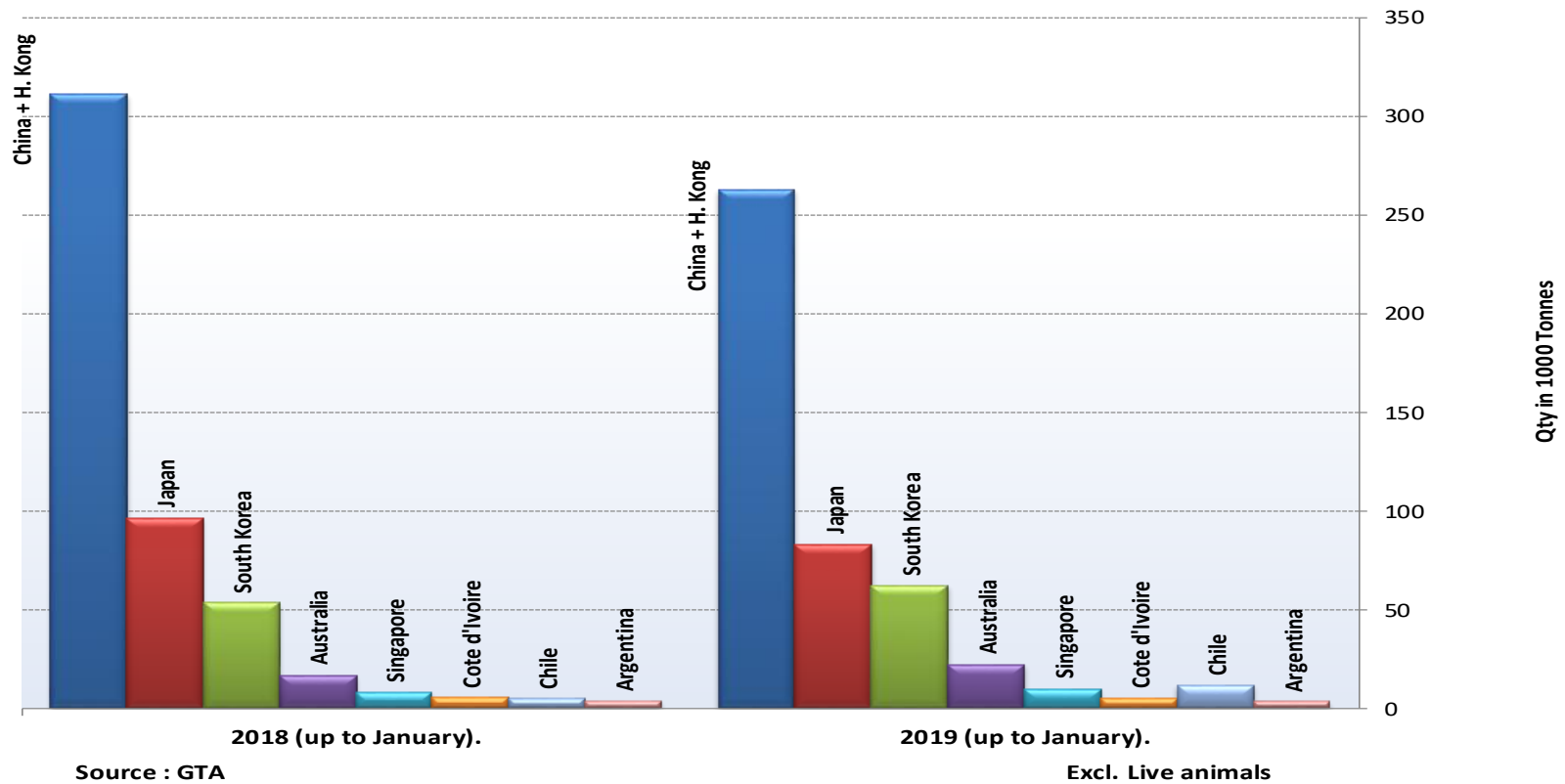


## Imports of selected PIG products





## Main Importers of PIG Products (up to January).





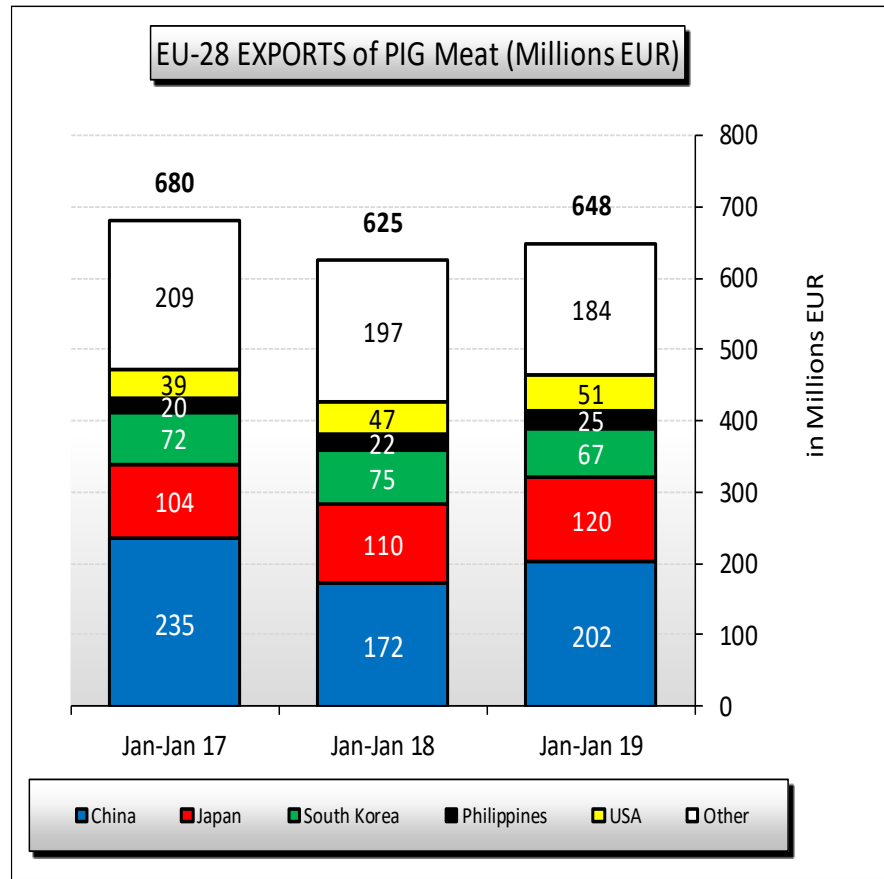
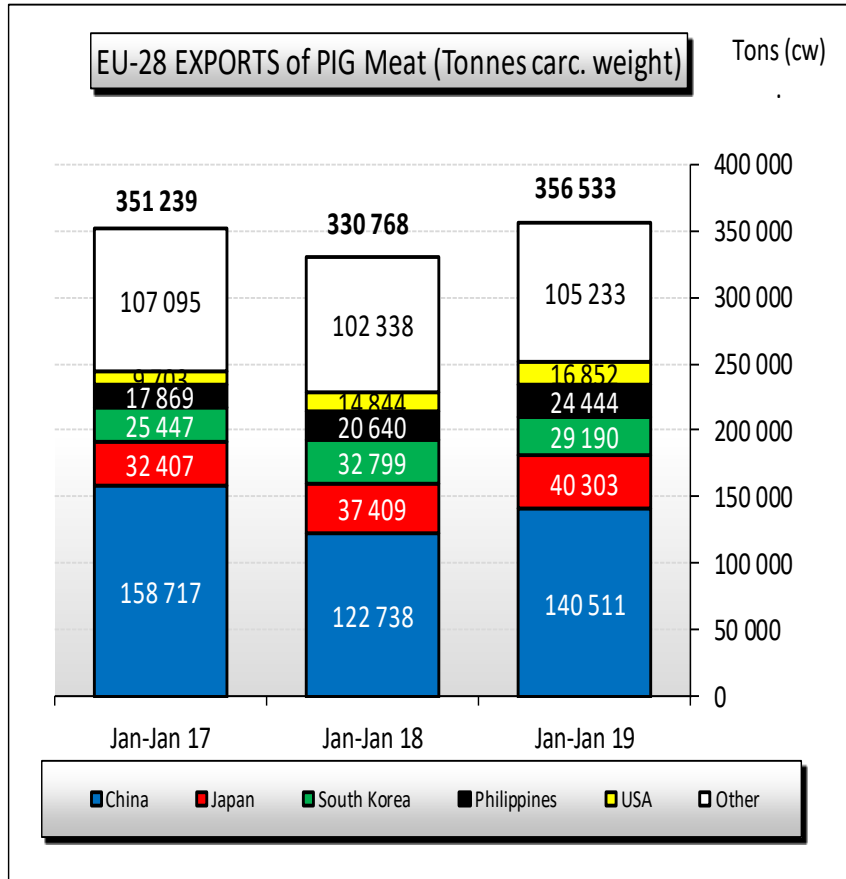
## EU exports of selected PIG products: Trade figures (COMEXT – tonnes carcass weight)

	2015		2016		2017		2018		Jan-Jan 19		Compared to Jan-Jan 18
	tonnes	%	tonnes	%	tonnes	%	tonnes	%	tonnes	%	
China	1 141 484	33.9%	1 866 110	44.9%	1 406 733	36.5%	1 353 459	35.0%	140 511	39.4%	+ 14%
Japan	364 745	10.8%	405 311	9.7%	425 761	11.1%	433 431	11.2%	40 303	11.3%	+ 8%
South Korea	241 569	7.2%	260 593	6.3%	276 136	7.2%	335 134	8.7%	29 190	8.2%	- 11%
Philippines	191 891	5.7%	216 514	5.2%	251 492	6.5%	284 201	7.3%	24 444	6.9%	+ 18%
USA	105 123	3.1%	116 806	2.8%	155 461	4.0%	165 460	4.3%	16 852	4.7%	+ 14%
Hong Kong	292 651	8.7%	363 251	8.7%	383 948	10.0%	231 874	6.0%	14 835	4.2%	- 28%
Australia	102 645	3.0%	101 174	2.4%	95 351	2.5%	96 869	2.5%	10 317	2.9%	+ 2%
Ukraine	96 619	2.9%	75 547	1.8%	86 944	2.3%	107 087	2.8%	8 925	2.5%	+ 19%
Taiwan	53 701	1.6%	47 825	1.1%	64 443	1.7%	55 537	1.4%	7 270	2.0%	- 2%
Vietnam	38 290	1.1%	53 483	1.3%	41 637	1.1%	86 307	2.2%	6 673	1.9%	+ 73%
Serbia	47 488	1.4%	41 151	1.0%	54 934	1.4%	65 593	1.7%	4 440	1.2%	- 29%
Thailand	35 323	1.0%	35 311	0.8%	31 120	0.8%	27 286	0.7%	3 601	1.0%	+ 9%
Other	658 680	19.5%	576 017	13.8%	575 116	14.9%	627 571	16.2%	49 172	13.8%	
Extra-EU	3 370 209		4 159 093		3 849 076		3 869 811		356 533		
% change			+ 23%		- 7%		+ 1%		+ 7.8%		





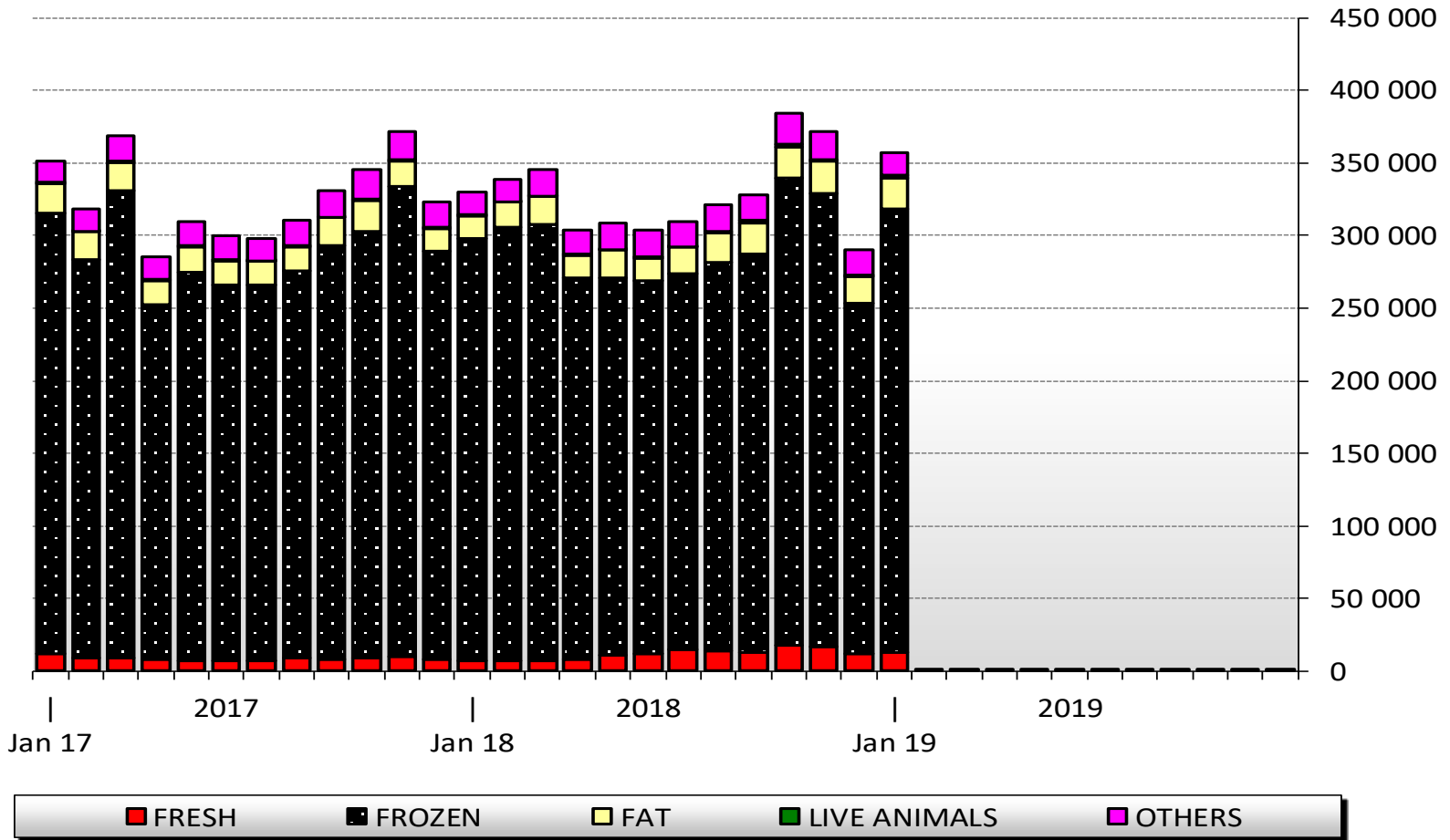
## EU exports of selected PIG products Trade figures (COMEXT – tonnes carcass weight)





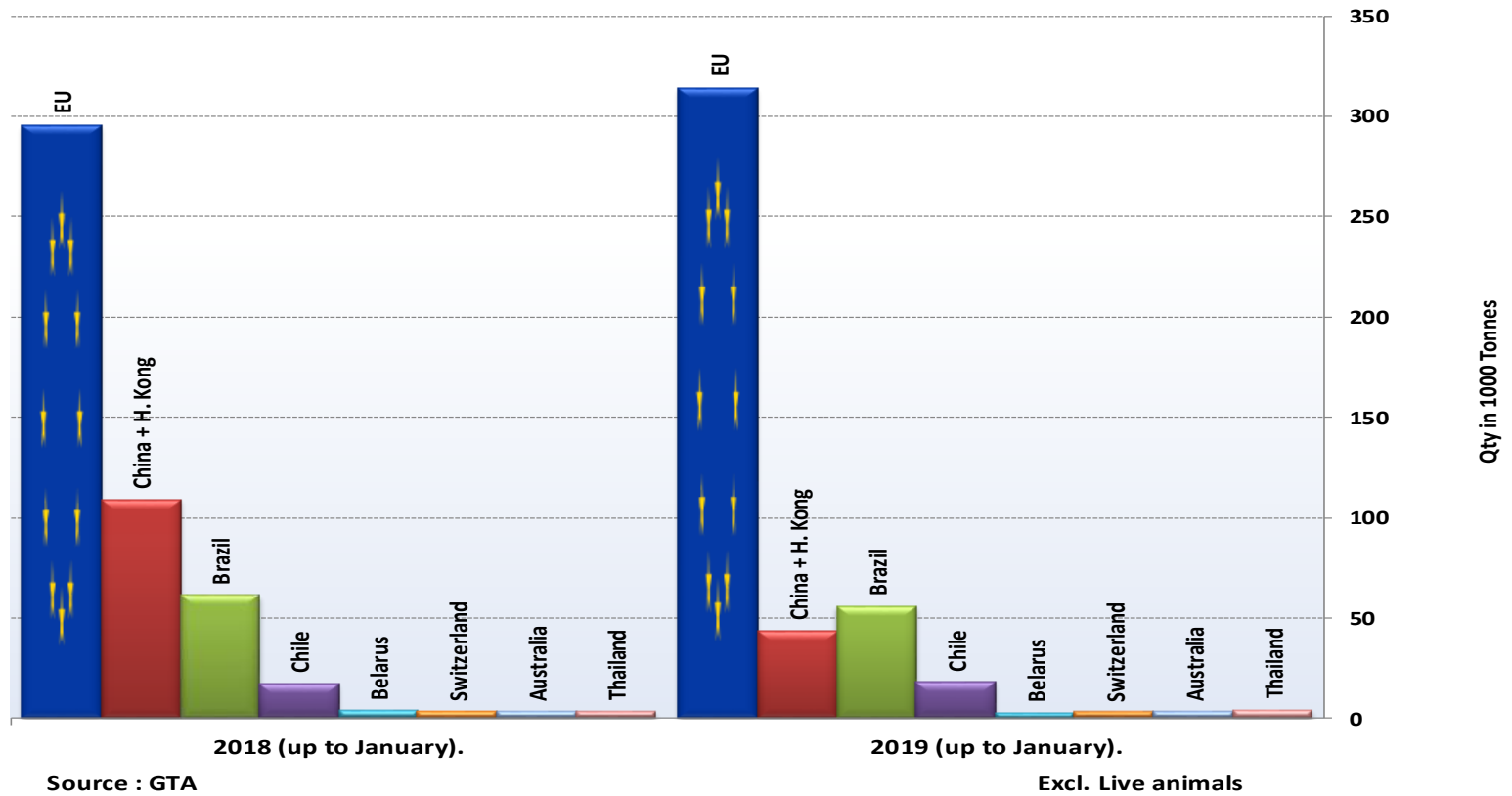
## EU Exports of selected PIG products

in Tonnes  
(carcase weight)



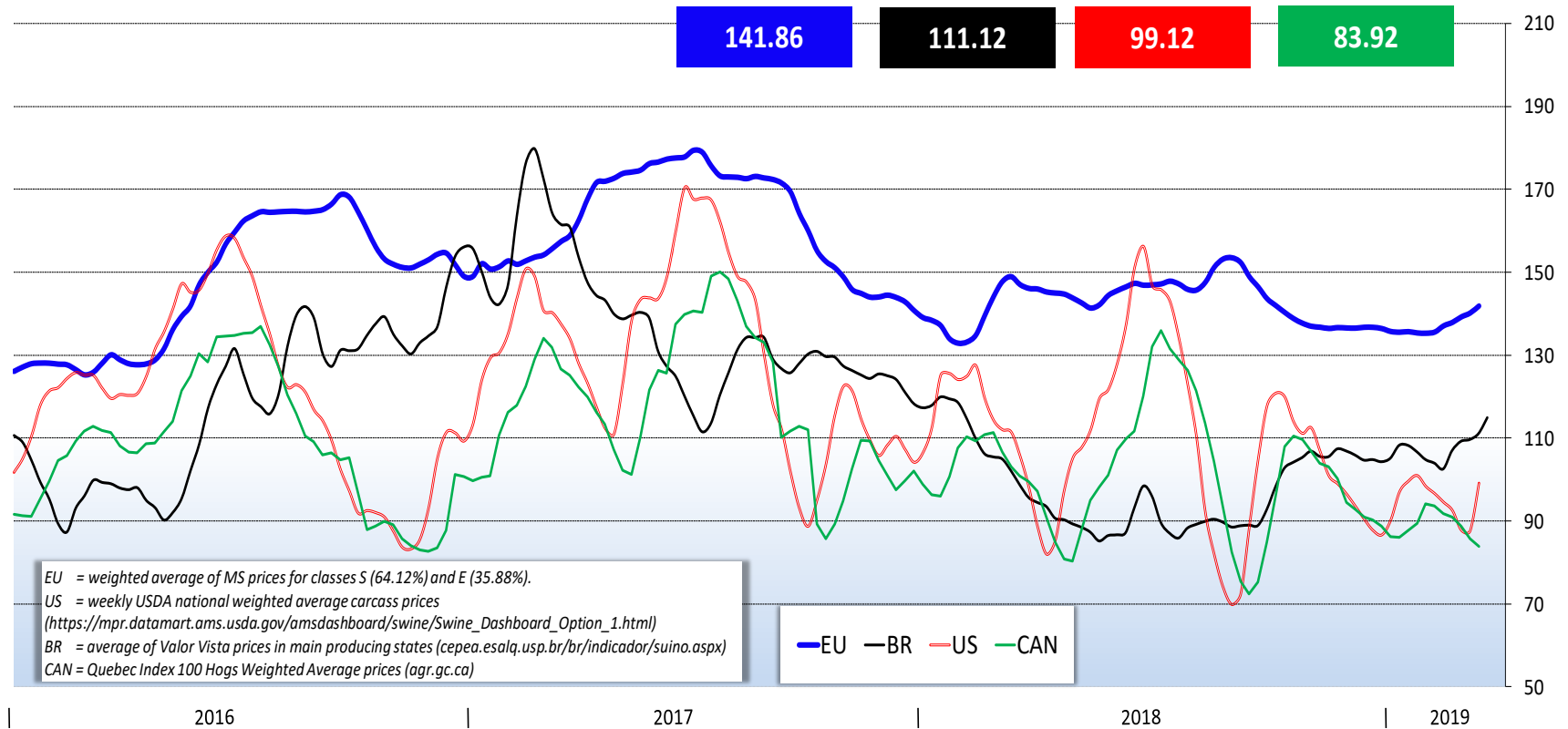


## Main Exporters of PIG Products (up to January).





## World weekly average Pig prices 2016 - 2019 in Euro/ 100kg carcase (EU, Brazil, Canada and USA)





## **Follow market updates via the Meat Market Observatory**

**[http://ec.europa.eu/agriculture/market-observatory/meat/index\\_en.htm](http://ec.europa.eu/agriculture/market-observatory/meat/index_en.htm) > Pigmeat**

**and check the latest data on the Agri-Food Data Portal:**

**[http://agridata.ec.europa.eu/extensions/DataPortal/agricultural\\_markets.html](http://agridata.ec.europa.eu/extensions/DataPortal/agricultural_markets.html) > Pigmeat**